



BLUE ORCHID
HOSPITALITY

www.blueorchid.com



Represented worldwide by
www.G-H-S.com





BLUE ORCHID HOSPITALITY

Welcome to Blue Orchid Hospitality, a private collection of luxury independent hotels, apartments and residences carefully combined with state-of-the-art events, meetings and conference venues and restaurants and bars, located in the heart of London; the world's most exciting city.

Featuring some of the best located properties in the capital, Blue Orchid Hospitality skilfully blends a wealth of history and local tradition with contemporary luxury.

Whether you're in search of the very best central London meetings, events or conference venues, or hotel suites, sumptuous apartments or elegant residences, Blue Orchid can satisfy the most discerning client in search of the very best central London venue.

Events and conference spaces offer a diverse range of opportunities to suit a wide variety of requirements; from London's latest roof top venue boasting stunning panoramic views over London's iconic skyline to a charming chapel in leafy Westminster.

You will always find interesting architecture, exquisite furnishings and warm, friendly and attentive service - the hallmarks of Blue Orchid Hospitality.

TOWER SUITES

100 Minories, London EC3N 1JY

THE WELLINGTON

71 Vincent Square, London SW1P 2PA



TOWER SUITES

BLUE ORCHID HOSPITALITY

Stunning meetings, events & conference venues featuring the very best views over London's iconic landmarks

Outstanding Meetings and Events Venues
Private Rooftop Venue
Conference Spaces

Co-working space
Flexible Spaces
Natural Daylight
High Speed Wi-Fi

State-of-the-art Technology
Bespoke Menus
Dedicated Events Team
Built in hybrid set up

 100 Minories, EC3N 1JY

 towersuites.events@blueorchid.com

 +44 (0) 207 152 4123

Tower Suites offers the perfect venue for your unforgettable meeting or event. Whether it is a wedding celebration, private dinner, conference or a business meeting, Tower Suites ensures inspiring and flexible spaces, contemporary décor and professional and attentive staff, a gem stone's throw from London's world renowned heritage sites and iconic landmarks.

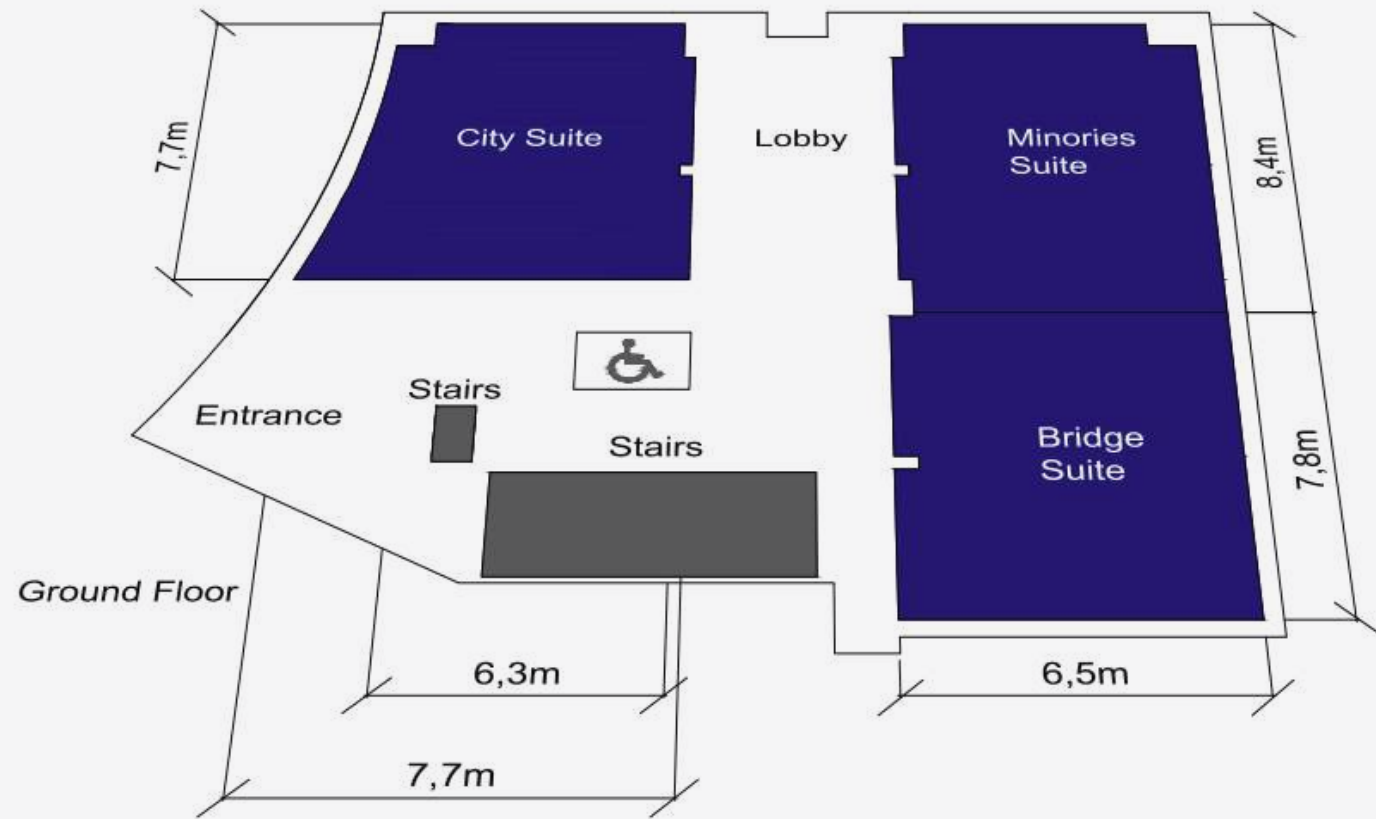
Offering one of London's best and most exclusive private roof top venues, spanning panoramic views over London's skyline, make sure your event leaves a lasting impression with The Skyline London's unrivalled views

The 273 all-suites hotel benefits from a spa, Italian inspired restaurant, sophisticated event bars and all the amenities and services to ensure a memorable event.

Corporate Meetings
Charitable Events
Gala Dinners

Wedding Celebrations
Birthday and Anniversary Celebrations

Presentations / Training / Seminars Private Dining
Private Screenings
Intimate & confidential meetings

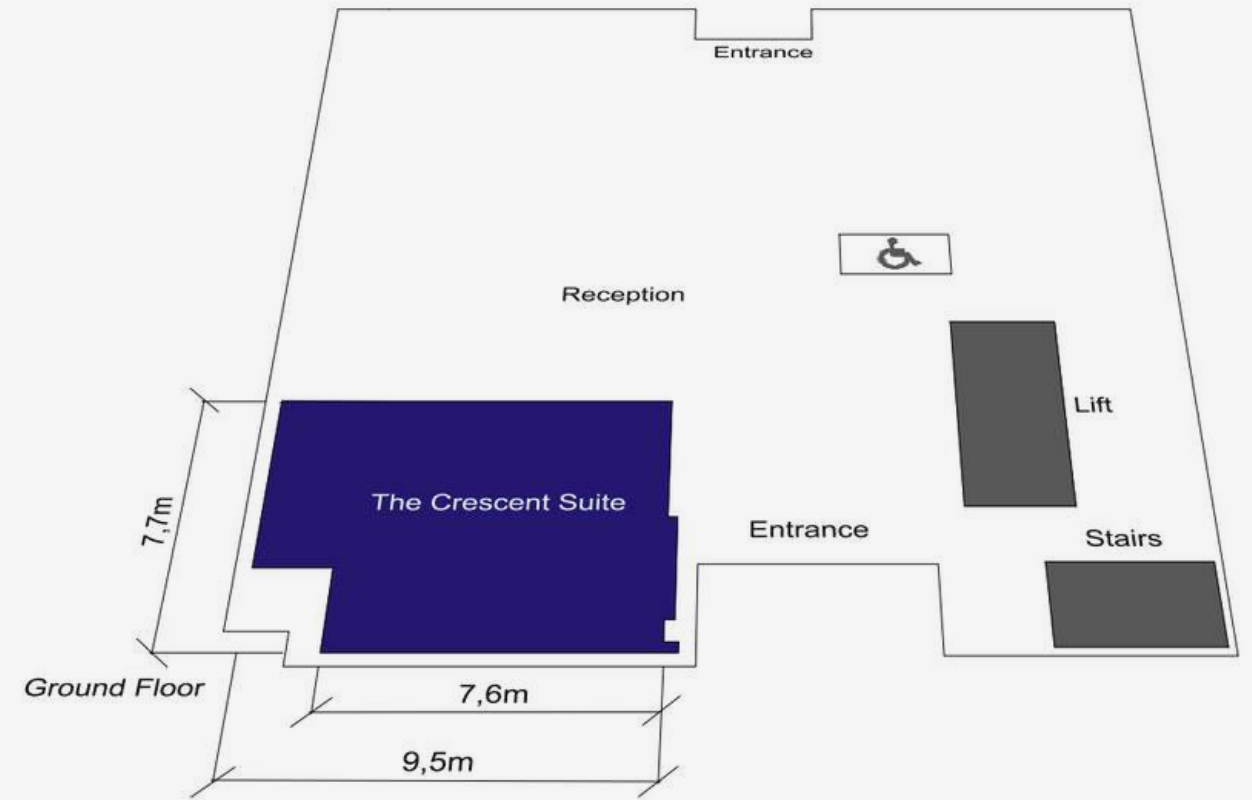


Royal Suite: 360 tour *Drinks reception* **Capacity = 190**
(City + Minories + Bridge)

Royal Suite: 360 tour *Theatre* **Capacity = 190**
(City + Minories + Bridge)

City Suite: 360 tour *Boardroom* **Capacity = 190**





Crescent Suite: 360 tour

Capacity

Banquet = 40

Theatre = 30

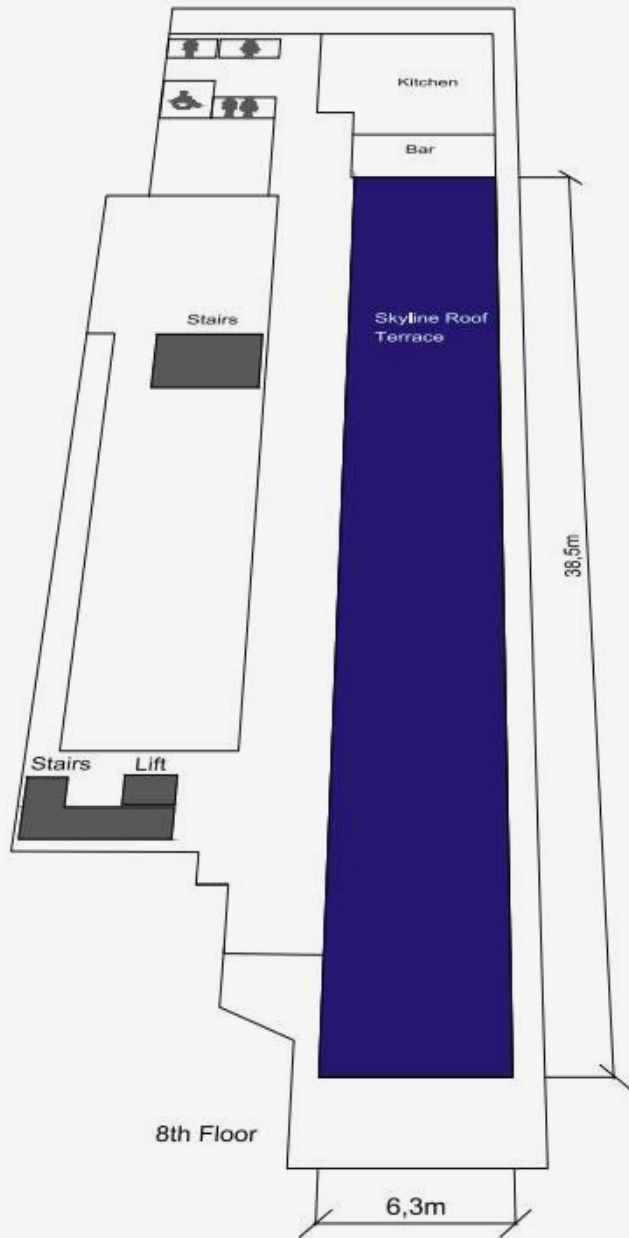
Board Room = 20

Classroom = 15

U-Shape = 12

Cabaret = 21

Reception = 60



The Skyline London
360 tour - U-shape
Capacity = 55

The Skyline London
360 tour - Cabaret
Capacity = 210

The Skyline London
360 tour - Wedding
Capacity = 260





TOWER SUITES

BLUE ORCHID HOSPITALITY

Offering independent living in the heart of the City

273 Individual Suites
with fully equipped private
kitchen and lounges

High Speed Internet
State-of-the-art Flat Screen TVs

Executive Lounge
Co-working space
24-Hour Gym

Cento Alla Torre Italian Restaurant
Sapphire Cocktail Bar
Organic Coffee & Juice Bar
Luxury Spa

 100 Minories, EC3N 1JY

 towersuites.reservations@blueorchid.com

 +44 (0) 207 152 4123

Commanding sweeping views over the River Thames and the Tower of London, Tower Suites offers a diverse range of accommodation, hospitality and events services. Located in the heart of the city's famous business district and with easy access to Canary Wharf, the Square Mile's, financial heartland and London's most vibrant tourist attractions, Tower Suites is a perfect base for a productive stay in the capital. Beautifully appointed suites provide all the amenities sought by today's most discerning guests.

Each of the 273 individual suites feature wireless and fixed high speed internet, Bluetooth-enabled Media Hubs and state-of-the-art LED flat screen smart TVs.

Guests can enjoy independent living inside elegant suites with fully equipped kitchens and lounges whilst having access to the myriad facilities & services of a five-star hotel. Recognising the burgeoning trend for independent living and personal space, Tower Suites is perfect for any length of stay or purpose whether for business or leisure.

Explore The Neighbourhood

Moments away from Tower Hill underground & Tower Gateway DLR stations, surrounded by cultural landmarks, guests are never short of things to do whilst staying at Tower Suites. Onsite knowledgeable concierge and guest service associates ensure an enjoyable and productive visit to some of the finest world heritage sites, landmarks and vibrant restaurants, museums, cultural and shopping experiences nearby.



THE WELLINGTON

BLUE ORCHID HOSPITALITY

Venue suites boasting characteristical charm

Unique Meeting and Events Venues

Natural Daylight

Stunning Acoustics

High Speed Wi-Fi

State-of-the-art Technology

Flexible Spaces

Bespoke Menus

Dedicated Events Team

Onsite Restaurants & Bars

71 Vincent Square, London SW1P 2PA

wellington.events@blueorchid.com

+44 (0) 20 7834 4740

Flexible meeting rooms combined with state of art technology with period features, The Wellington offers a comprehensive and versatile range of air-conditioned conference and events facilities for both private and corporate events. The Wellington Suite's high ceilings and stained glass windows, flooded with natural daylight provides a stunning event space with fabulous acoustics. The Chapel Suite, with its striking dome ceilings and Juliet balconies offers a unique and sophisticated venue space ensuring memorable events, for all the right reasons.




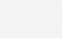
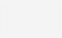
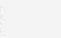
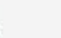
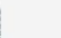
Spectacular event spaces, together with a stylish restaurant, contemporary bar and an experienced and professional meetings and events team enable a broad array of event options to satisfy the widest range of demands and tastes. From romantic wedding services to conferences, seminars and round table dinners, each event will be memorable for all the right reasons. Whether a business meeting, drinks reception or a private dinner, expect unique venues and personal discreet service.

Private Dining
Gala Dinners
Wedding Celebrations
Birthday and Anniversary Celebrations
Charity Events
Corporate Meetings
Christmas Parties
Afternoon Tea
Interviews
Presentations / Training
Business Lunches



MEETING SPACES

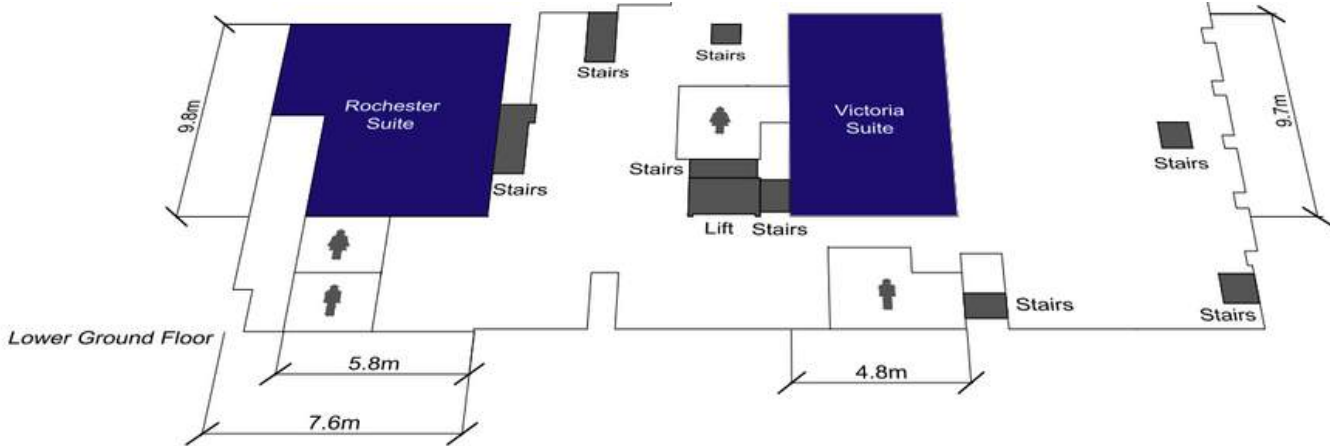
at The Wellington

Venue Name	 Banquet	 Theatre	 Board Room	 Classroom	 U Shape	 Cabaret	 Reception	 Natural Daylight
Wellington Suite	70	50	36	33	40	56	100	✓
Chapel Suite	40	70	22	24	20	32	80	✓
Rochester Suite	40	55	26	24	22	24	65	x
Victoria Suite	25	30	20	18	20	15	50	x



Chapel Suite: 360 tour Board Room Capacity = 22

Wellington Suite: 360 tour Banquet Capacity = 70





THE WELLINGTON

BLUE ORCHID HOSPITALITY

An oasis of calm in the heart of central London

160 Guest Rooms
Studios and Apartments
Restaurants & Bars

Meeting and Events Venues
24-Hour Gym
Garden Terrace

High Speed Wi-Fi
Media Hubs
Air Conditioning

 71 Vincent Square, London SW1P 2PA

 wellington.reservations@blueorchid.com

 +44 (0) 20 7834 4740

Nestled in a tranquil Westminster enclave, on leafy Vincent Square, The Wellington combines traditional elegance with contemporary style and modern decor. Overlooking its own private gardens and terraces, The Wellington provides an idyllic haven of hospitality, moments away from the hustle and bustle of the city, whilst remaining within easy reach of Buckingham Palace, St. James's Park, and the iconic Westminster Abbey and Houses of Parliament.

A classically elegant style, The Wellington features 84 beautifully appointed bedrooms

and five spacious, deluxe apartments, complete with self-catering facilities. Guests can enjoy fully air conditioned rooms with wireless and fixed high speed internet, LCD flat screen televisions, a fully equipped gym and 24-hour room service.

Experience the Italian inspired restaurant and in-house bar, away from vibrant activity of the capital and enjoy discreet, personal and attentive service at perfectly located The Wellington - an oasis of calm in the heart of central London.

Explore The Neighbourhood

Take a stroll down to Buckingham Palace or the iconic Westminster Abbey and Houses of Parliament. The myriad delights of London's renowned theatre, arts and cultural centre, and the business and financial districts are moments away. The Wellington is conveniently located just a short walk from St. James's Park and Westminster underground stations and Victoria underground, coach and rail stations, and perfectly located for access to London's Heathrow and Gatwick airports.



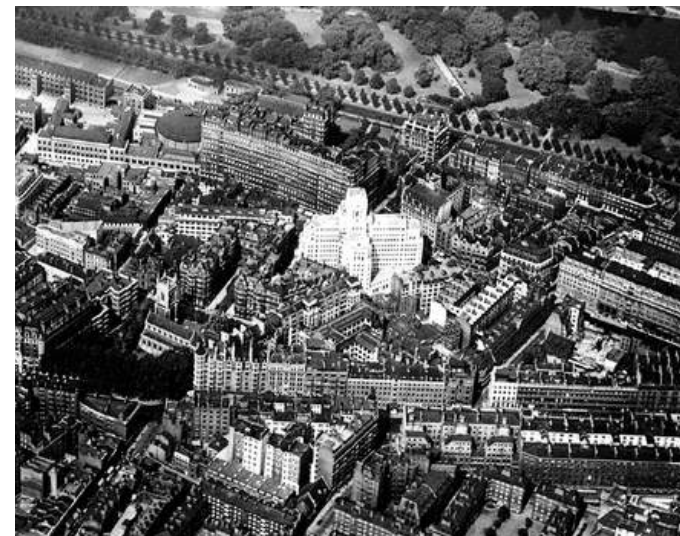
Blue Orchid Hospitality has recently purchased the Broadway Complex with the intention of serving as its long-term custodians, sensitively rejuvenating and opening-up this landmark to the public.

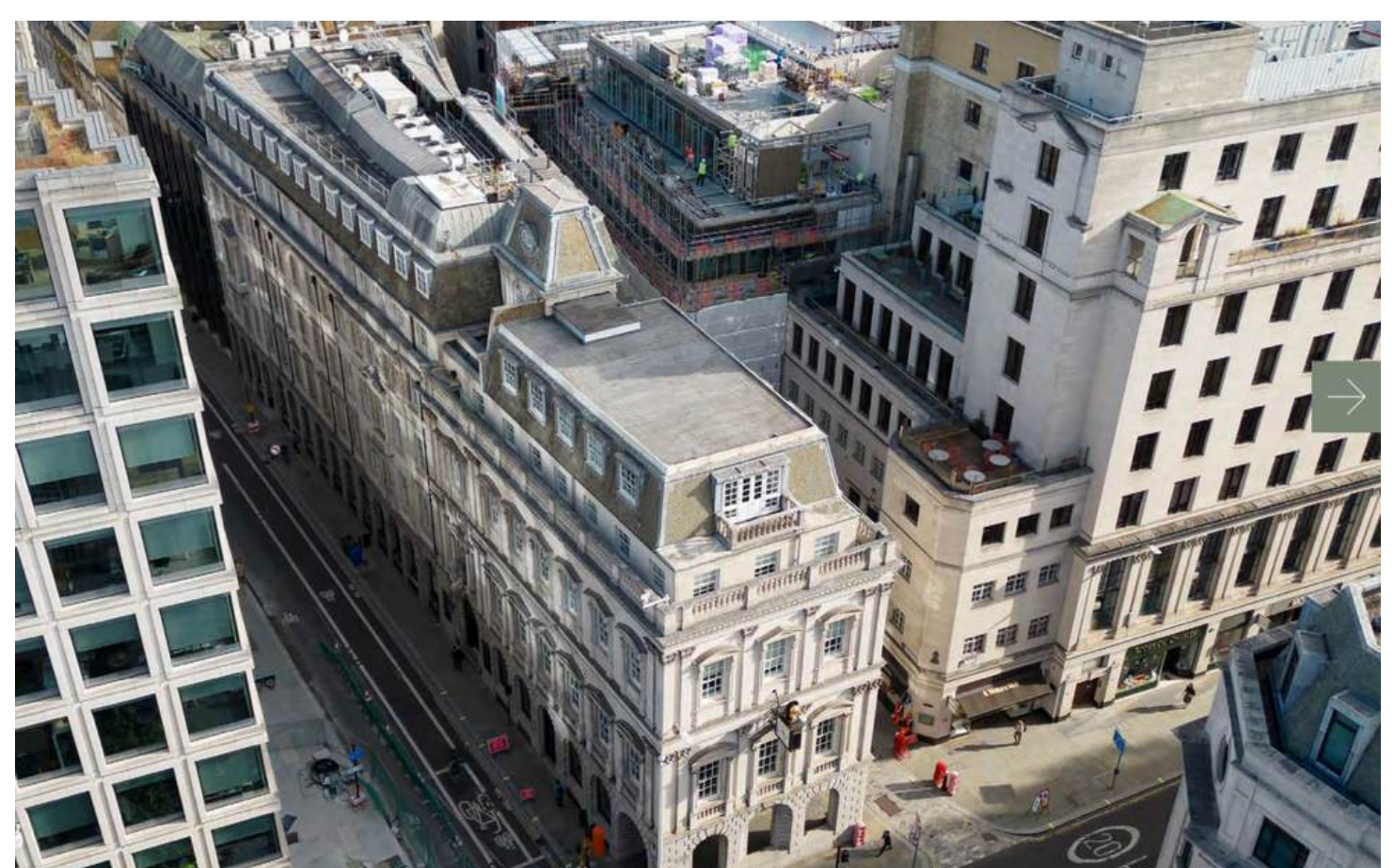
As the tallest building in the capital at the time, it was dubbed 'London's first skyscraper' at just over 53 metres and won the RIBA London Architecture Medal upon its completion.

Due to the exceptional architectural interest of the building and its position as a milestone in 20th Century design, 55 Broadway was upgraded to a Grade I listed status in 2011. The building still retains many of its original features, such as the lobby and landings, as well as wood panelled boardrooms on the 7th floor.

Blue Orchid has, as the new long-term custodians of 55 Broadway, has three principle objectives for the future of this landmark building.

- 1. To open-up 55 Broadway for public benefit by providing access, supporting the community and contributing to the local economy.**
- 2. To cherish the building and celebrate its heritage.**
- 3. To create a high-quality hotel offering stunning event spaces worthy of the building, to be owned and operated by dedicated hotel experts - Blue Orchid Hospitality.**





Blue Orchid Hospitality has recently purchased Atlas House, a prestigious London landmark in the heart of the capital

Atlas House is an elegant Grade II listed building situated at the core of the historic City of London, between the Guildhall, St Paul's Cathedral and the Bank of England – on the junction of King Street, Queen Street, and Cheapside.

100 Guest rooms and suites

24-hr Concierge & reception service

State-of-art event and meeting suites

Onsite restaurant, bar, spa and gym





Tower Apartments in the Crescent



Padel in the Crescent

The Crescent, a stunning collection of Georgian buildings, adjoins Blue Orchid’s multi award-winning Tower Suites hotel and benefits from views of the Tower of London and the historic Roman Wall, in a prime City location

The Crescent is a charming Georgian building in the City of London

110 Apartments and rooms

Gem stone’s thrown from the Tower of London

One of two bedroom apartments for up to 4 people per residence

24-hr Concierge & reception service

Access to bar, restaurant, spa & gym

Event, conference and meeting suites

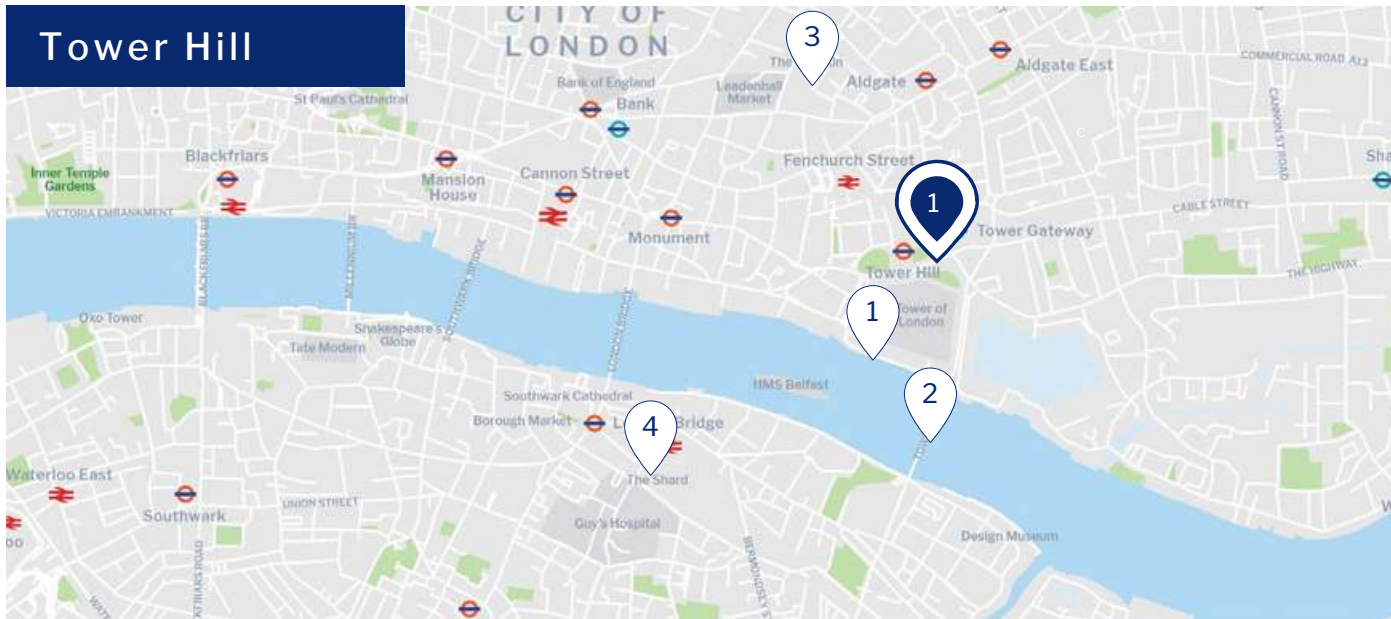


The view from Crescent



Tower Bridge looking westbound

Tower Hill



1 TOWER SUITES

100 Minories, London EC3N 1JY

- 3-minute walk from Tower Hill Tube Station (0.09 miles / 0.15 km)
- 1-minute walk from Tower Gateway DLR Station (0.02 miles / 0.03 km)
- 8-minute walk from Fenchurch Street Station (0.4 miles / 0.6 km)
- 13-minute walk from Liverpool Street Station (0.6 miles / 0.9 km)
- 25-minute train from London City Airport (6.1 miles / 9.8 km)
- 50-minute train from Gatwick Airport (29 miles / 47 km)
- 1-hour train from Heathrow Airport (18.6 miles / 30 km)



1 Tower of London



3 30 St Mary Axe "The Gherkin"



2 Tower Bridge



4 The Shard

Westminster



2 THE WELLINGTON

71 Vincent Square, London SW1P 2PA

- 6-minute walk from St. James's Park station (0.4 miles / 0.6 km)
- 10-minute walk from Victoria train station (0.6 miles / 0.8 km)
- 15-minute drive from Paddington train station (3 miles / 5.8 km)
- 45-minute tube from London City Airport (9.7 miles / 16 km)
- 30-minute train from Gatwick Airport (31.2 miles / 50 km)
- 45-minute taxi from Heathrow Airport or 15-minute train (15 miles / 24 km)



1 Buckingham Palace



3 House of Parliament & Big Ben



2 Westminster Abbey



4 London Eye



a THE WELLINGTON

b TOWER SUITES

c THE CRESCENT

d 55 BROADWAY

**e TOWER RESIDENCES -
apartments only**

f ATLAS HOUSE



1 Buckingham Palace



2 House of Parliament & Big Ben



3 Tower Bridge



4 Tower of London



5 St. Paul's Cathedral

The Global Goals for Sustainable Development

To put an end to poverty, to flight inequality and to address the urgency of climate change, global goals were established by the world leaders to build a better world by 2030. It is now in the responsibility of businesses and individuals to work together to pave the way for a more positive future for everyone. Blue Orchid Hospitality actively work with their partners towards accomplishing these global goals for sustainable development, read about how on our website.



NO POVERTY



ZERO HUNGER



QUALITY EDUCATION



GOOD HEALTH AND WELL-BEING



REDUCED INEQUALITIES



AFFORDABLE AND CLEAN ENERGY



DECENT WORK AND ECONOMIC GROWTH



SUSTAINABLE CITIES AND COMMUNITIES



GENDER EQUALITY



CLEAN WATER AND SANITATION



INDUSTRY, INNOVATION AND INFRASTRUCTURE



RESPONSIBLE CONSUMPTION AND PRODUCTION



PEACE, JUSTICE AND STRONG INSTITUTION



CLIMATE ACTION



PARTNERSHIP FOR THE GOALS


TOWER SUITES

BLUE ORCHID HOSPITALITY

 100 Minories, London EC3N 1JY

THE WELLINGTON

BLUE ORCHID HOSPITALITY

 71 Vincent Square, London SW1P 2PA

Events Team

 events@blueorchid.com

 +44 (0) 0203 972 1600

Sales Team

 sales@blueorchid.com

 +44 (0) 0203 972 1800



BLUE ORCHID
HOSPITALITY

www.blueorchid.com



Represented worldwide by
www.G-H-S.com

